

**NOTES**

**AUDITORIUM**  
 Size 13.6m (44'6") x 9.2m (30')  
 Front half each row stepped 1 in 5.5  
 Back half each row stepped 1 in 3.3

**GRID**  
 Height 1.2m (3'9") to underside  
 Maximum flying height 11.4m (37'5")  
 Hemps A-D flying height 7.75m (25'5")

**STAGE SIZE**  
 Proscenium Arch Height 3.8m (12'5")  
 Proscenium Arch Width 6.67m (21'10")  
 Maximum Stage Depth 11.1m (36'5")

**FORESTAGE**  
 Two 2', four 4' (interchangeable) and 2 curved sections, can be lowered by 0.57m (1'10") max.  
 Steps available with 0.17m (6.75") risers.

**GET IN DOORS AND TRAPS**  
 Get-in doors 1.14m x 2.19m (3'8" x 7'2") or 0.76m x 2.04m (2'6" x 6'8"). Staircase should be checked if large pieces of scenery are to be used  
 Traps to scene dock below stage, aperture 3.55m x 1.03m (11'7" x 3'4")

**ORCHESTRA PIT**  
 Depth 1.6m (5'3") below stage  
 Depth 0.8m (2'9") below auditorium  
 Useful width 1.55m (5'1")

**adc theatre**

PARK STREET - CAMBRIDGE CB5 8AS - TELEPHONE (01223) 359547 - WEBSITE <http://www.adc.theatre.com>

**STAGE PLAN SCALE 1:25 (A1) 1:50 (A3)**

PRODUCTION	DATES	
	COMPANY	
DIRECTOR	DESIGNER	
LIGHTING DESIGNER	DRAWN	DATE

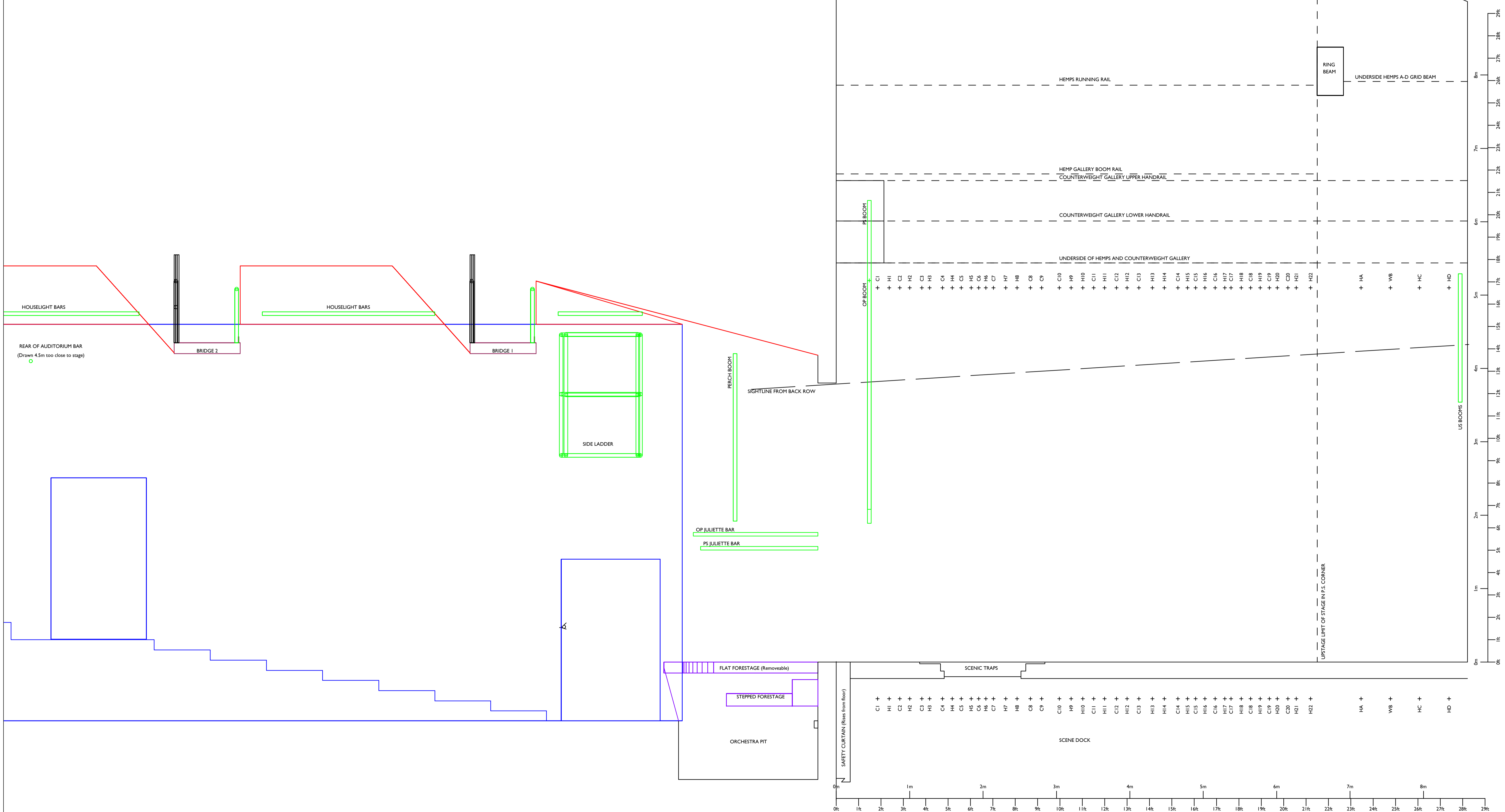
ADC CAD Model maintained by Eddy Langley - <http://www.eddylangley.net/adc/> - Last updated: Saturday March 11 2023



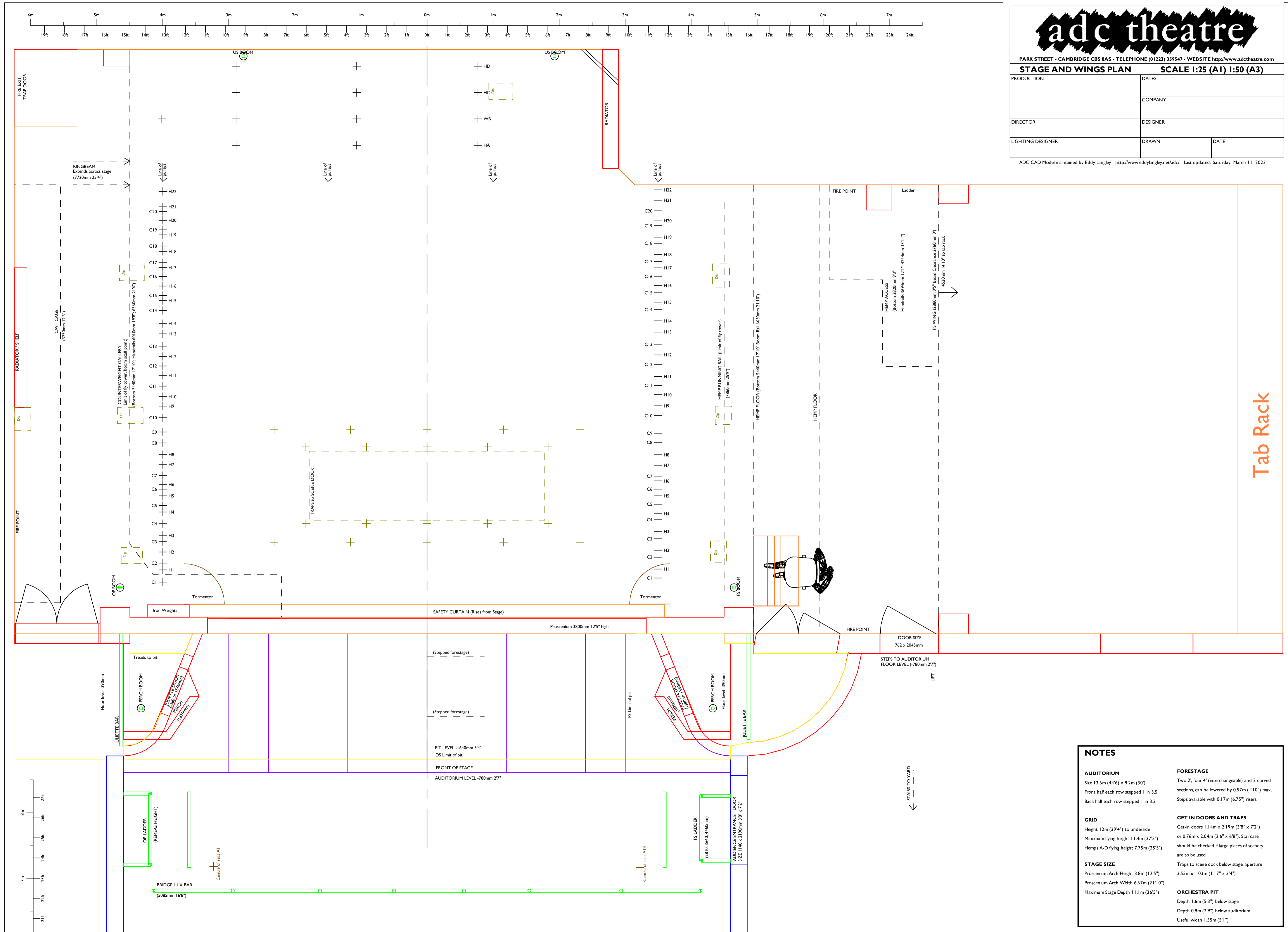
PARK STREET - CAMBRIDGE CB5 8AS - TELEPHONE (01223) 359547 - WEBSITE <http://www.adctheatre.com>

STAGE SECTION		SCALE 1:25 (A1) 1:50 (A3)	
PRODUCTION	DATES		
	COMPANY		
DIRECTOR	DESIGNER		
LIGHTING DESIGNER	DRAWN	DATE	

ADC CAD Model maintained by Eddy Langley - <http://www.eddylangley.net/adc/> - Last updated: Saturday March 11 2023



PRODUCTION	DATES	
	COMPANY	
DIRECTOR	DESIGNER	
LIGHTING DESIGNER	DRAWN	DATE



Tab Rack

**NOTES**

<p><b>AUDITORIUM</b> Size 13.6m (44'6") x 9.2m (30') Front half each row stepped 1 in 5.5 Back half each row stepped 1 in 3.3</p>	<p><b>FORESTAGE</b> Two 2', four 4' (interchangeable) and 2 curved sections, can be lowered by 0.57m (1'10") max. Steps available with 0.17m (6.75") risers.</p>
<p><b>GRID</b> Height 12m (39'4") to underside Maximum flying height 11.4m (37'5") Hemps A-D flying height 7.75m (25'5")</p>	<p><b>GET IN DOORS AND TRAPS</b> Get-in doors 1.14m x 2.19m (3'8" x 7'2") or 0.76m x 2.04m (2'6" x 6'8"). Staircase should be checked if large pieces of scenery are to be used Traps to scene dock below stage, aperture 3.55m x 1.03m (11'7" x 3'4")</p>
<p><b>STAGE SIZE</b> Proscenium Arch Height 3.8m (12'5") Proscenium Arch Width 6.67m (21'10") Maximum Stage Depth 11.1m (36'5")</p>	<p><b>ORCHESTRA PIT</b> Depth 1.6m (5'3") below stage Depth 0.8m (2'9") below auditorium Useful width 1.55m (5'1")</p>



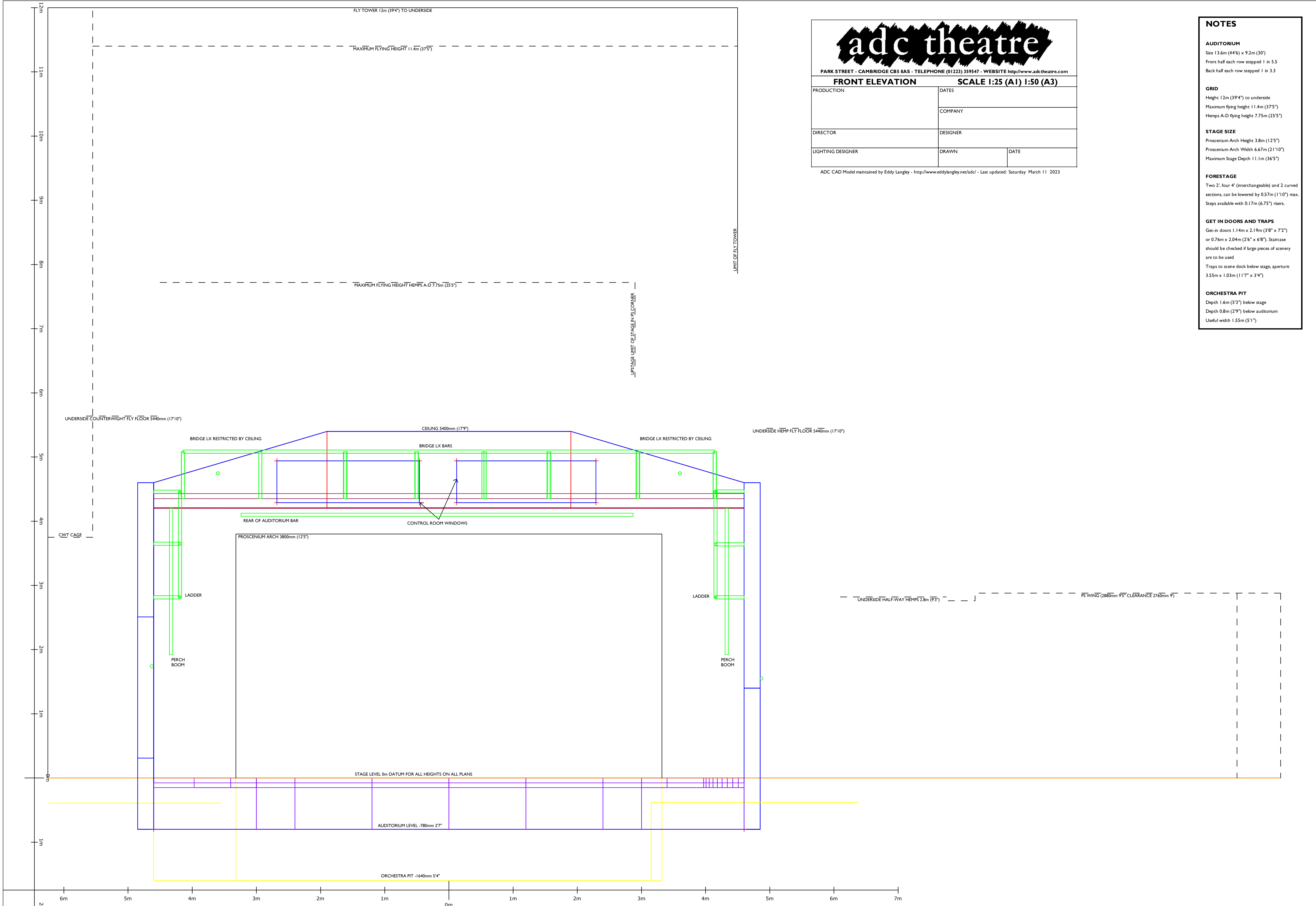
PARK STREET - CAMBRIDGE CB5 8AS - TELEPHONE (01223) 359547 - WEBSITE <http://www.adctheatre.com>

**FRONT ELEVATION SCALE 1:25 (A1) 1:50 (A3)**

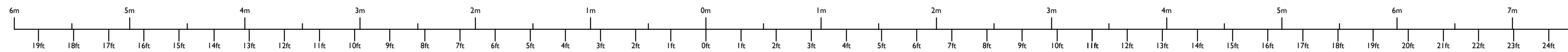
PRODUCTION	DATES	
	COMPANY	
DIRECTOR	DESIGNER	
LIGHTING DESIGNER	DRAWN	DATE

ADC CAD Model maintained by Eddy Langley - <http://www.eddylangley.net/adc/> - Last updated: Saturday March 11 2023

- NOTES**
- AUDITORIUM**  
 Size 13.6m (44'6") x 9.2m (30')  
 Front half each row stepped 1 in 5.5  
 Back half each row stepped 1 in 3.3
- GRID**  
 Height 12m (39'4") to underside  
 Maximum flying height 11.4m (37'5")  
 Hemps A-D flying height 7.75m (25'5")
- STAGE SIZE**  
 Proscenium Arch Height 3.8m (12'5")  
 Proscenium Arch Width 6.67m (21'10")  
 Maximum Stage Depth 11.1m (36'5")
- FORESTAGE**  
 Two 2', four 4' (interchangeable) and 2 curved sections, can be lowered by 0.57m (1'10") max. Steps available with 0.17m (6.75") risers.
- GET IN DOORS AND TRAPS**  
 Get-in doors 1.14m x 2.19m (3'8" x 7'2") or 0.76m x 2.04m (2'6" x 6'8"). Staircase should be checked if large pieces of scenery are to be used  
 Traps to scene dock below stage, aperture 3.55m x 1.03m (11'7" x 3'4")
- ORCHESTRA PIT**  
 Depth 1.6m (5'3") below stage  
 Depth 0.8m (2'9") below auditorium  
 Useful width 1.55m (5'1")





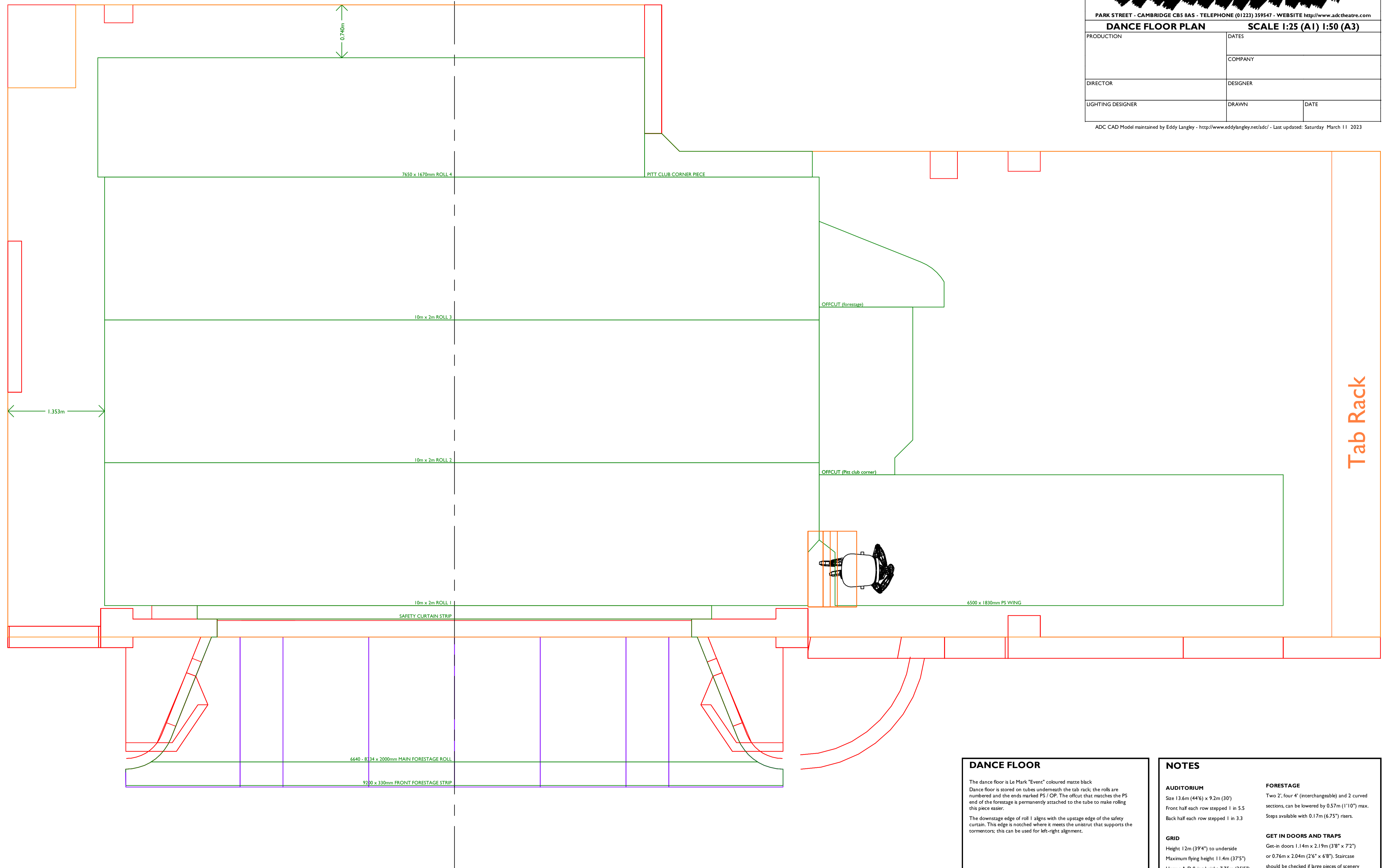


PARK STREET - CAMBRIDGE CB5 8AS - TELEPHONE (01223) 359547 - WEBSITE <http://www.adctheatre.com>

**DANCE FLOOR PLAN SCALE 1:25 (A1) 1:50 (A3)**

PRODUCTION	DATES	
	COMPANY	
DIRECTOR	DESIGNER	
LIGHTING DESIGNER	DRAWN	DATE

ADC CAD Model maintained by Eddy Langley - <http://www.eddylangley.net/adc/> - Last updated: Saturday March 11 2023



1.353m

0.740m

6500 x 1830mm PS WING

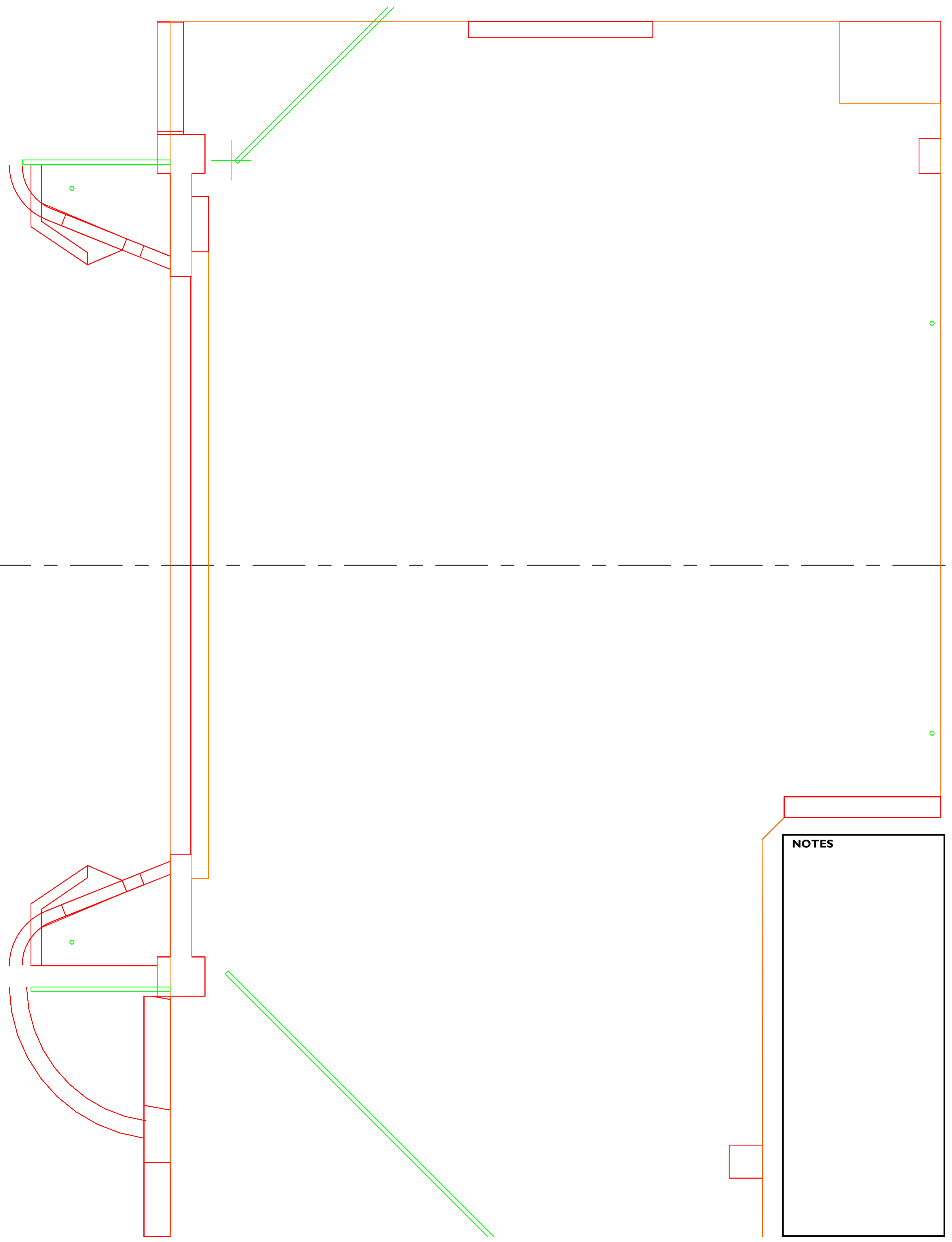
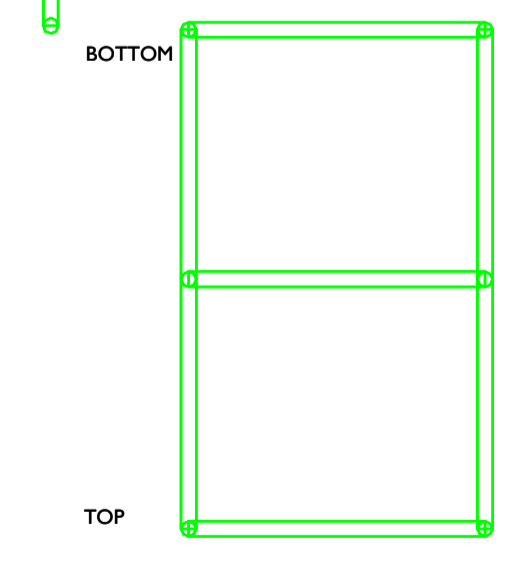
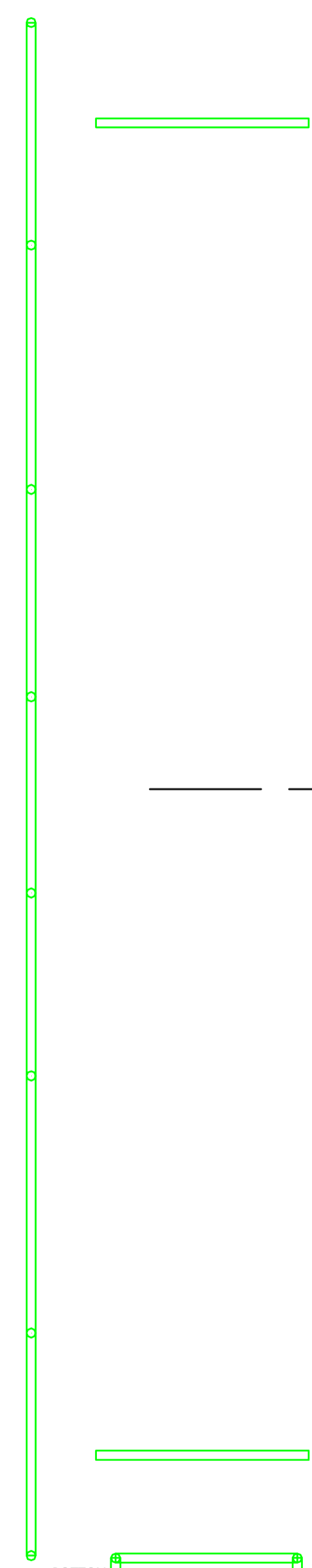
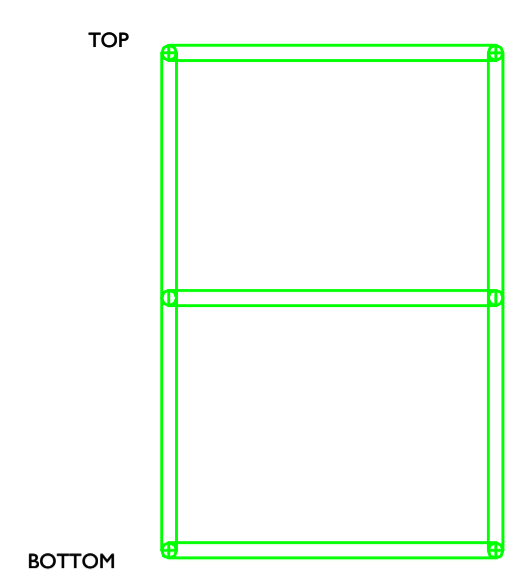
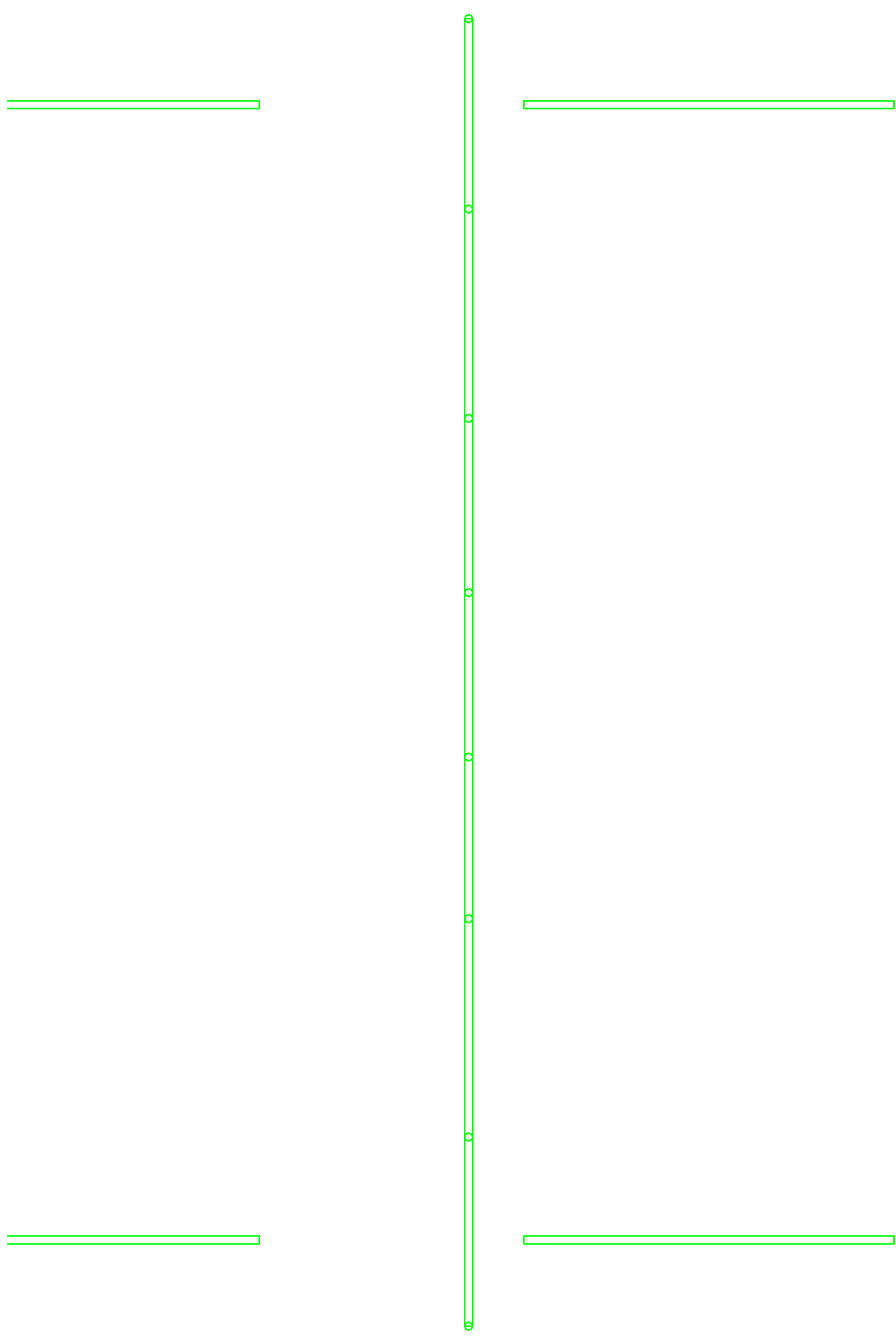
Tab Rack

**DANCE FLOOR**

The dance floor is Le Mark "Event" coloured matte black.  
 Dance floor is stored on tubes underneath the tab rack; the rolls are numbered and the ends marked PS / OP. The offcut that matches the PS end of the forestage is permanently attached to the tube to make rolling this piece easier.  
 The downstage edge of roll 1 aligns with the upstage edge of the safety curtain. This edge is notched where it meets the unistrut that supports the tormentors; this can be used for left-right alignment.

**NOTES**

<p><b>AUDITORIUM</b>          Size 13.6m (44'6") x 9.2m (30')          Front half each row stepped 1 in 5.5          Back half each row stepped 1 in 3.3</p>	<p><b>FORESTAGE</b>          Two 2', four 4' (interchangeable) and 2 curved sections, can be lowered by 0.57m (1'10") max. Steps available with 0.17m (6.75") risers.</p>
<p><b>GRID</b>          Height 1.2m (39'4") to underside          Maximum flying height 11.4m (37'5")          Hems A-D flying height 7.75m (25'5")</p>	<p><b>GET IN DOORS AND TRAPS</b>          Get-in doors 1.14m x 2.19m (3'8" x 7'2") or 0.76m x 2.04m (2'6" x 6'8"). Staircase should be checked if large pieces of scenery are to be used          Traps to scene dock below stage, aperture 3.55m x 1.03m (11'7" x 3'4")</p>
<p><b>STAGE SIZE</b>          Proscenium Arch Height 3.8m (12'5")          Proscenium Arch Width 6.67m (21'10")          Maximum Stage Depth 11.1m (36'5")</p>	<p><b>ORCHESTRA PIT</b>          Depth 1.6m (5'3") below stage          Depth 0.8m (2'9") below auditorium          Useful width 1.55m (5'1")</p>



**NOTES**

**adc theatre**  
 PARK STREET - CAMBRIDGE CB5 8AS - TELEPHONE (01223) 359547 - WEBSITE <http://www.adctheatre.com>

**LX PLAN** SCALE 1:25 (A1) 1:50 (A3)

PRODUCTION	DATES	
	COMPANY	
DIRECTOR	DESIGNER	
LIGHTING DESIGNER	DRAWN	DATE

ADC CAD Model maintained by Eddy Langley - <http://www.eddylangley.net/adc/> - Last updated: Saturday March 11 2023